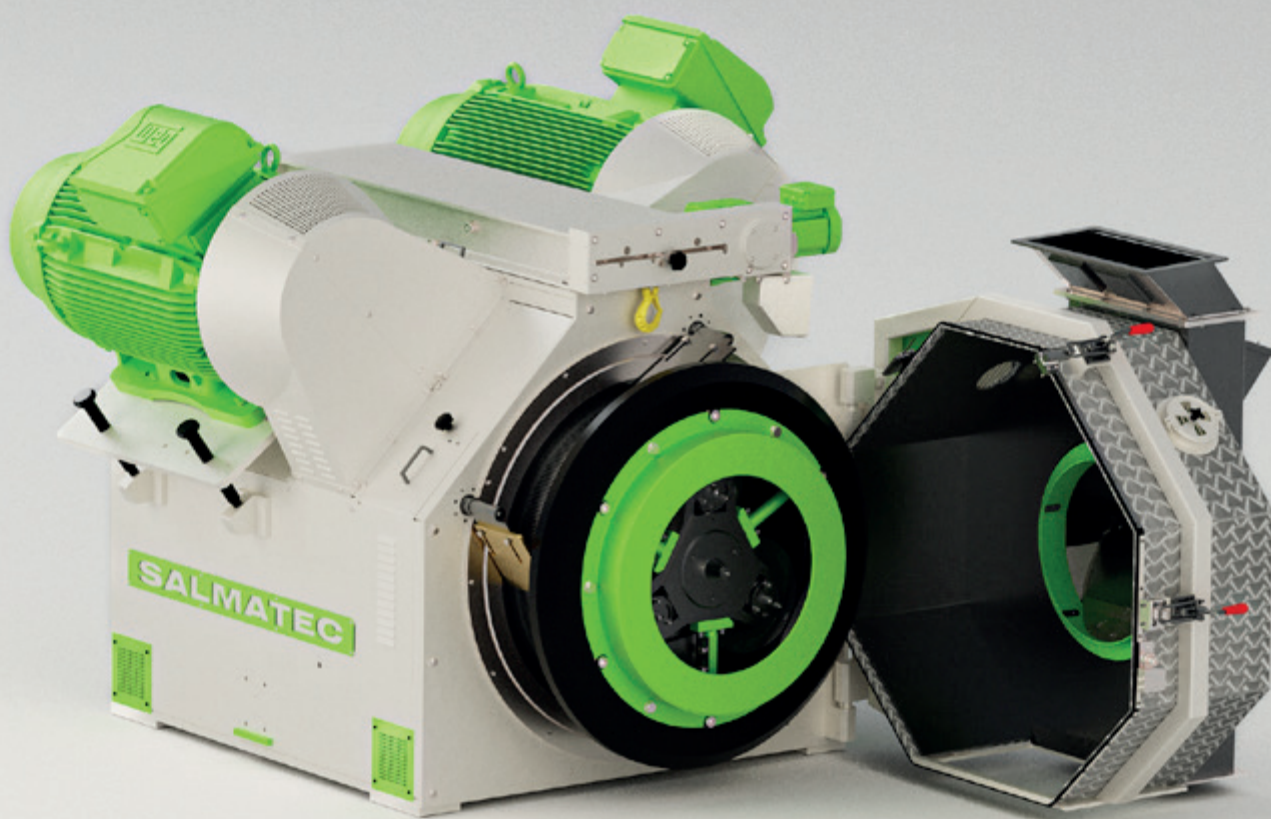




SALMATEC

PELLETIZERS



**MAXIMA
FEEDSTUFF**

CONTENT

P. 3

PELLETIZERS

P. 4

OUR MAXIMA SERIES

P. 5

STANDARD EQUIPMENT

P. 6

SPECIAL EQUIPMENT

P. 11

TYPE OVERVIEW

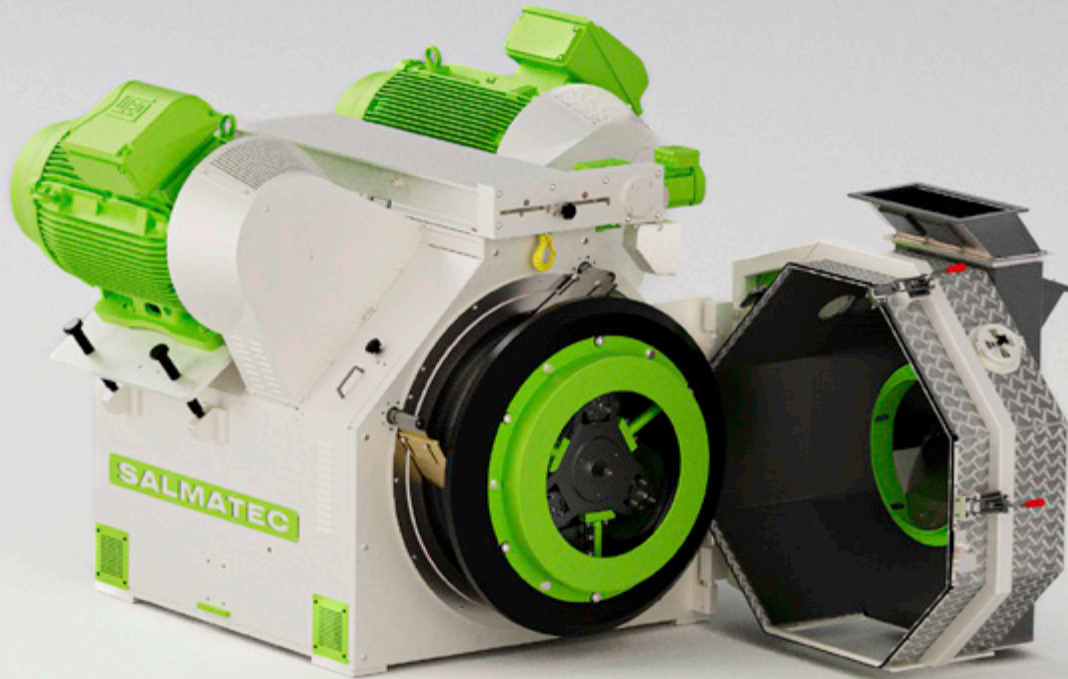
P. 12

FEEDSTUFF PELLETS

P. 14

DIMENSIONS

PELLETIZERS



The pellet press is our core product and the basis of our business success. It ensures the shape and quality of your end product. That is why it must function 100% of the time, everywhere. We are aware of this responsibility; it is our driving force and our motivation.

Our SALMATEC pellet presses in the MAXIMA series have a modular design and can be optimally adapted to a wide variety of tasks. In order to meet the high demands of successful pelletizing, we place the highest demands on our design and manufacturing. Forward-looking 3D design combined with a high level of vertical integration ensure a consistently high level of quality. Without compromise.

It doesn't matter whether you operate a machine with 15 or 500 kW.

OUR MAXIMA SERIES

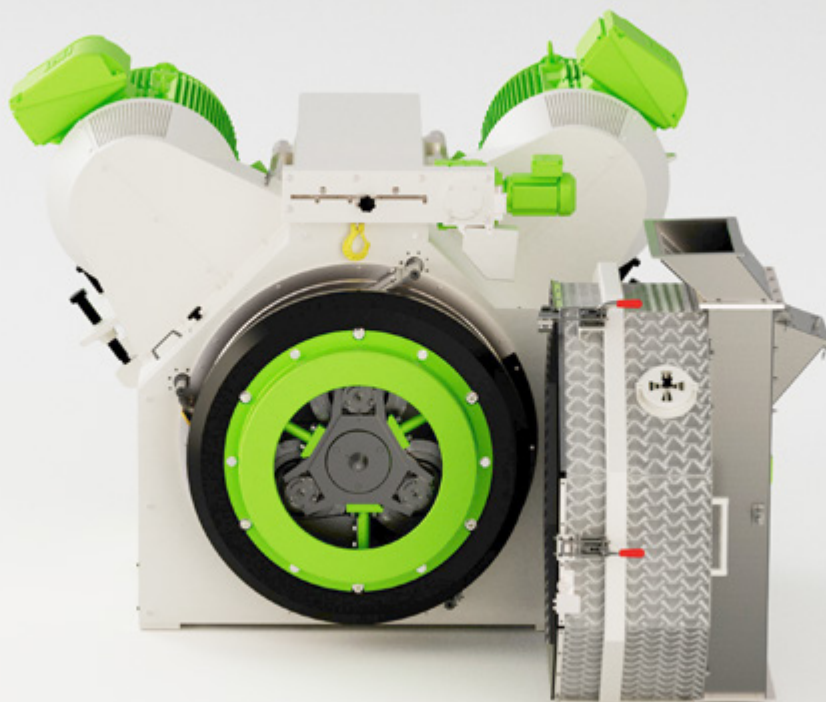
WHAT SETS OUR MAXIMA BRAND APART:

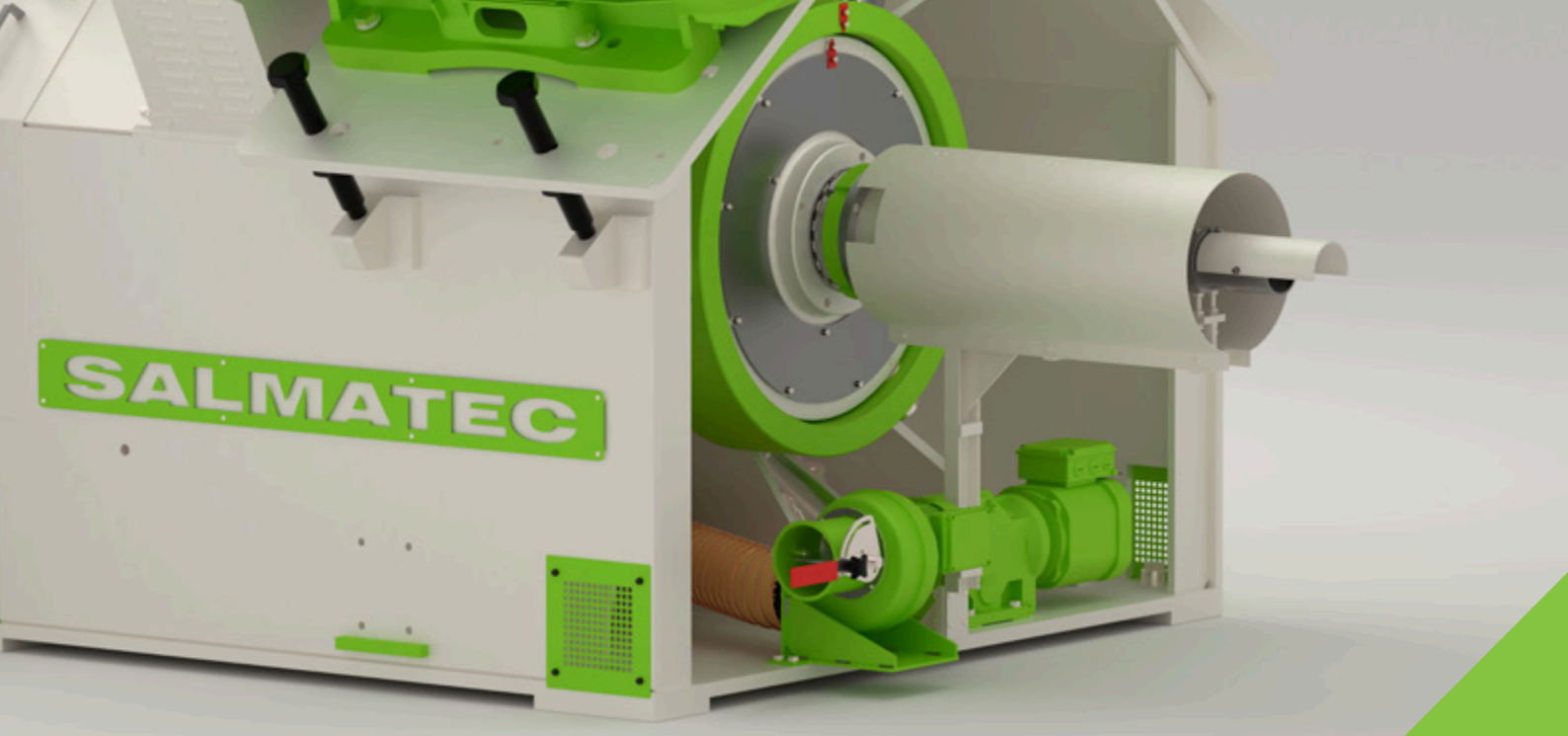
A powerful and energy-efficient direct drive forms the heart of our machine concepts. The single-stage drive via standard V-belts ensures particularly efficient power transmission and high efficiency. The result is low-noise and low-maintenance operation that ensures maximum availability over the long term.

The high flywheel mass enables particularly smooth machine operation and contributes significantly to process stability. At the same time, the optimized main bearing load ensures a long service life for all central components, even under heavy loads.

The high flywheel mass enables particularly smooth machine operation and contributes significantly to process stability. At the same time, the optimized main bearing load ensures a long service life for all central components, even under demanding operating conditions.

Depending on requirements, the machine can be equipped with either two or three rollers. Special inlets for light bulk materials ensure reliable material feed, while the even pressure distribution on the ring die ensures consistently high product quality. The result is a perfectly coordinated overall system that combines efficiency, durability, and high performance.



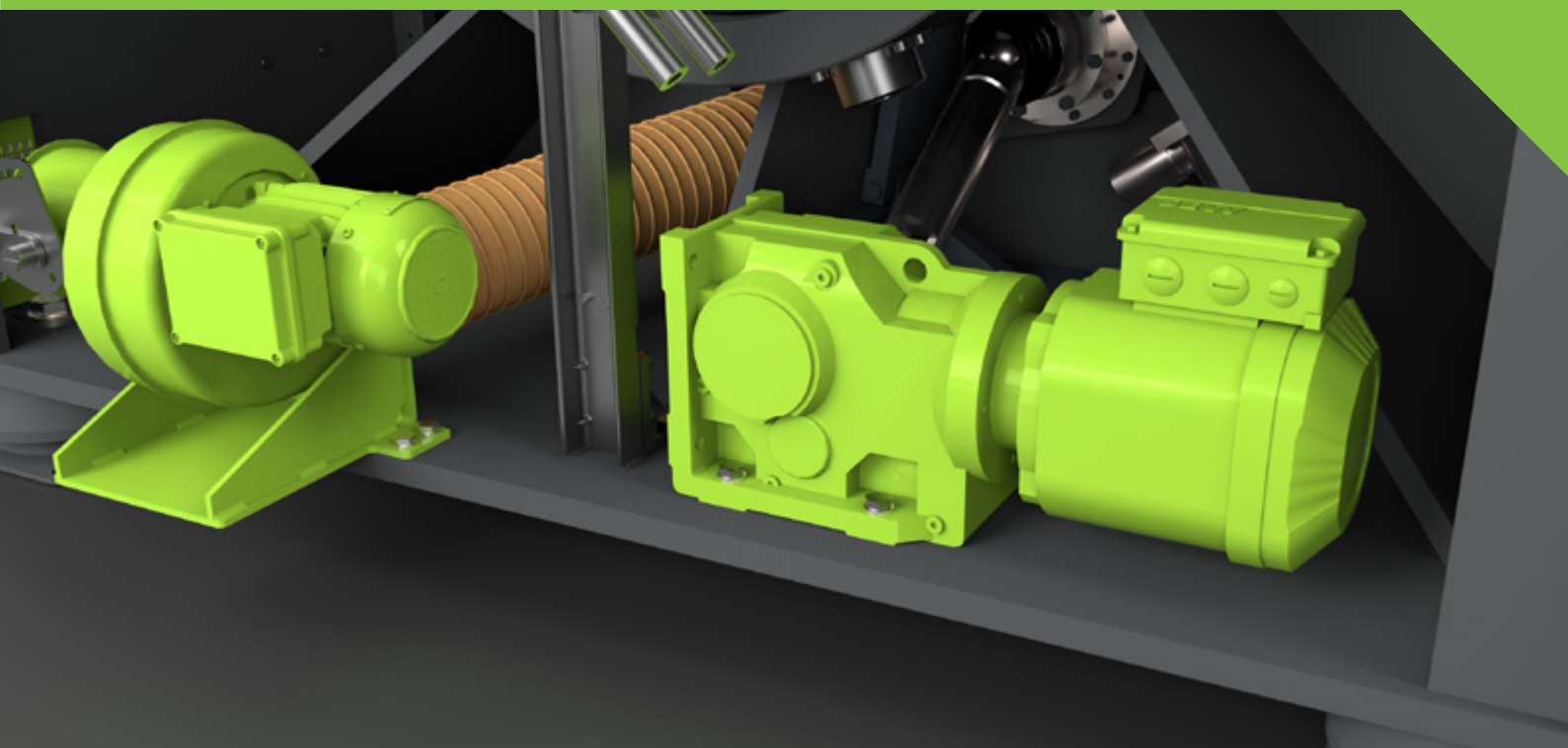


OVERLOAD CLUTCH:

The system reliably protects the pellet mill from overload and foreign objects. In the event of a release, the roller package runs freely while a safety switch sends a signal for immediate shutdown. Compared to conventional shear bolts, this solution works more precisely and effectively and enables the system to be quickly restarted.

MAINTENANCE DRIVE:

The slow rotation of the die in a clockwise or counterclockwise direction enables particularly convenient and safe operation. Simplified die replacement, improved adjustment options for the roller gap, and precise adjustment of the V-belt tension increase user-friendliness and efficiency. Even when the press door is open, the die can rotate slowly without compromising safety.



SPECIAL EQUIPMENT

AUTOMATIC LUBRICATION SYSTEM:

The rollers and main bearings are lubricated by an electronic lubrication pump with individually adjustable lubrication quantity. The system is automatically refillable and also suitable for minimum lubrication. This increases operational reliability and significantly extends the service life of the bearings.

ROLLER SPEED MONITORING:

Monitoring the roller speed at the feed roller is an ideal parameter for precisely regulating the feed quantity. This improves process stability and increases plant availability.

MULTI KNIFE:

Specially designed for the production of fuel pellets, the system significantly reduces the proportion of oversized pellets. This ensures that quality standards such as EN Plus A1 can be reliably met. It also increases press performance, as less material needs to be separated and reworked.



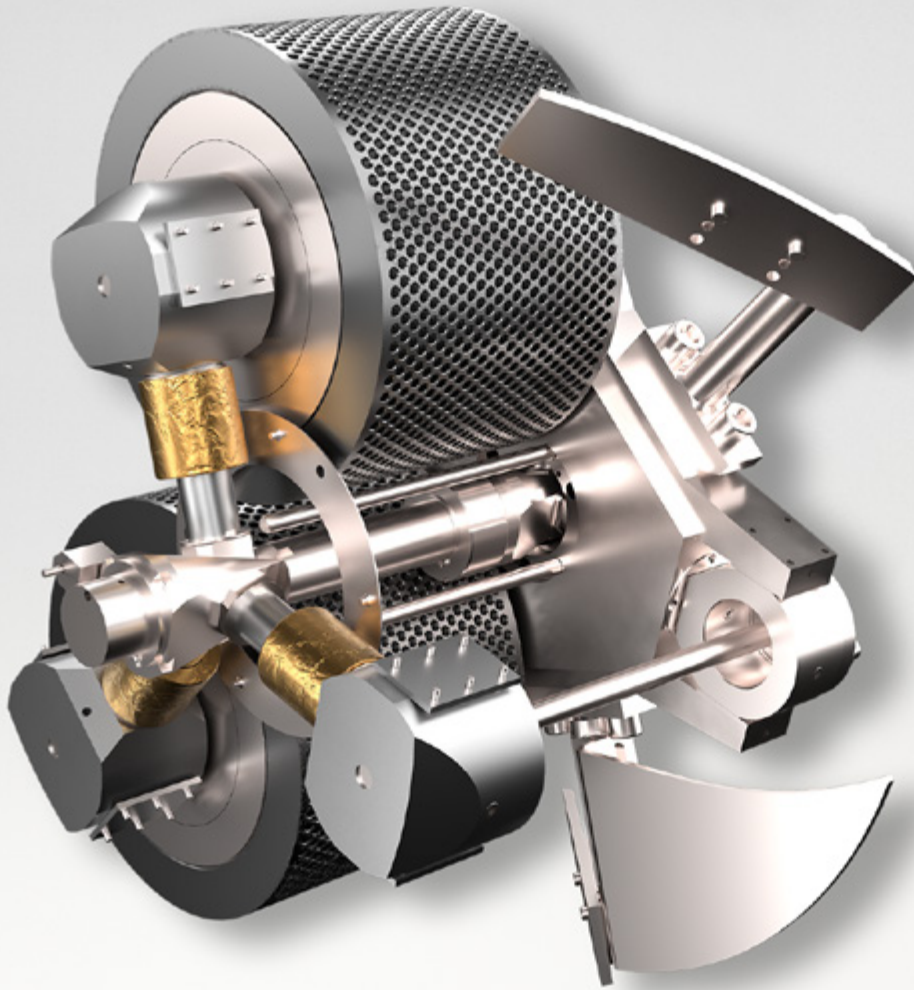


AUTOMATIC LIFTING FRAME FOR ROLLERS AND DIES:

The robust, statically tested electric winch with chain, optionally hydraulically extendable, greatly facilitates the handling of heavy pressing tools. It shortens the time required for roller and matrix changes and ensures greater efficiency in the maintenance process.

COMBINATION OF ROLL COOLING AND TEMPERATURE MONITORING:

The combination of roller cooling and roller temperature monitoring ensures maximum process reliability. Cooling the stud bolt with a liquid medium effectively reduces the internal roller temperature, while temperature monitoring detects overheating at an early stage. This increases bearing life and availability and is particularly suitable for demanding or difficult-to-pelletize raw materials.



AUTOMATIC ROLLER ADJUSTMENT:

The patented automatic remote roller adjustment system allows for precise adjustment of the roller gap even during operation. An integrated measuring system in the cylinder ensures maximum accuracy, while the rear-mounted design prevents contamination of the pressing chamber. This extends the service life of the pressing tools and significantly improves pellet quality.

ROLLERS WITH LIFETIME LUBRICATION:

Rollers with lifetime lubrication offer a particularly resource-efficient and economical solution. They reduce operating costs, prevent product contamination, and require no grease during operation. Factory-set bearings ensure high operational reliability and can be reused multiple times depending on the application.

INLET CHUTE:

Specially developed for pelletizing light bulk materials, the press can be equipped with different inlets. Large material chutes, simple drop chutes, or forced feeders with adjustable conveyor paddles ensure ideal handling of the individual material. An integrated inspection opening facilitates maintenance and inspection.

INSULATED AND HEATED PRESS DOOR:

The insulated and heated press door ensures a consistently stable temperature and prevents condensation from forming. This prevents the pressed material from sticking and ensures a clean interior. High-quality, chlorine-free mineral wool and sturdy stainless steel cladding ensure durability and optimal insulation.

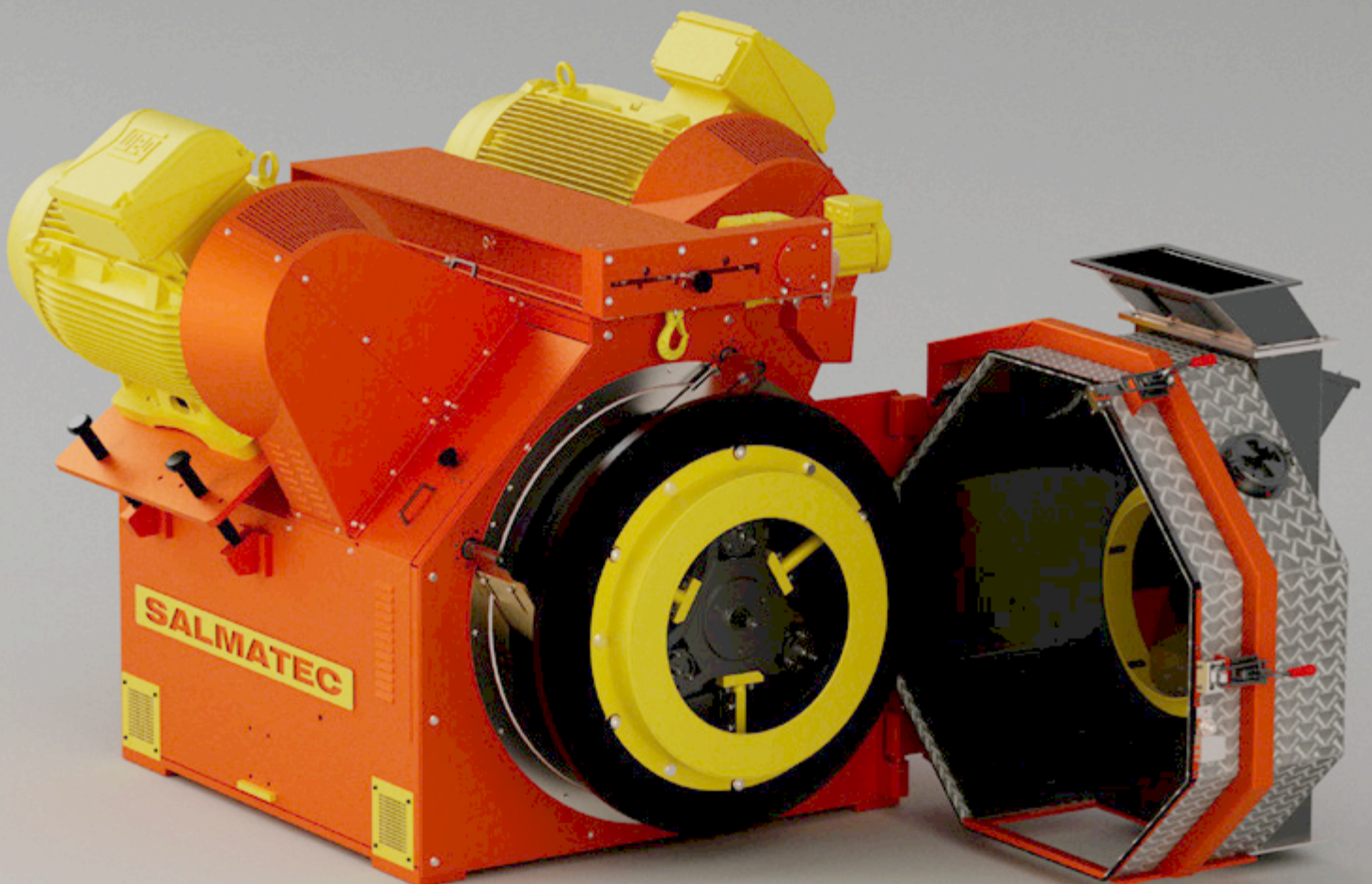


VIBRATION DETECTION OVER 3 AXES:

A microcontroller-based measuring system detects vibrations in all three axes and combines them into an overall signal. This allows operating conditions to be reliably monitored and analyzed at an early stage. Connection to existing PLC systems is straightforward.

CUSTOMIZED PAINT FINISH:

The paint finish of the press can be customized. In addition to the standard designs, all color combinations according to the RAL color chart are available, allowing optimal adaptation to customer-specific requirements or corporate designs.



TYPE OVERVIEW

Pelletizer Model	Drive Power	Die-Ø
MAXIMA 360 Mini	15 KW - 37 KW	360 mm
MAXIMA 450	74 KW - 110 KW	450 mm
MAXIMA 500	74 KW - 150 KW	500 mm
MAXIMA 580	74 KW - 150 KW	580 mm
MAXIMA 700	180 KW - 264 KW	700 mm
MAXIMA 840	220 KW - 400 KW	840 mm
MAXIMA 900	320 KW - 500 KW	900 mm
MAXIMA 1000	320 KW - 500 KW	1000 mm



VARIOUS FEED PELLETS

The modular design of our pelletizing presses allows us to tailor each machine specifically to its intended application. The die plays a key role in determining the shape and properties of the pellets, enabling us to produce a wide variety of diameters, bulk densities, hardness levels, and lengths. With the help of our technical laboratory, we are also able to continuously test new material compositions for their pelletizability.





POULTRY FEED



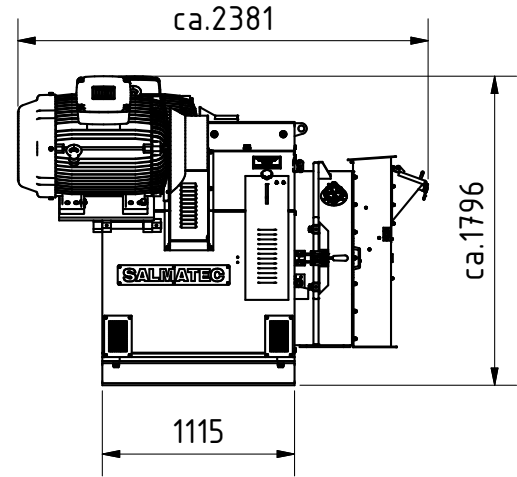
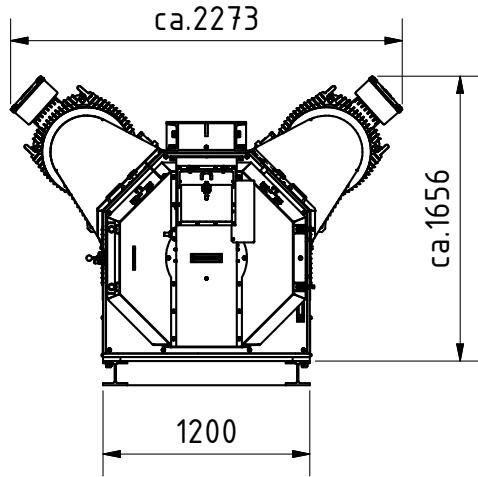
PIG FEED



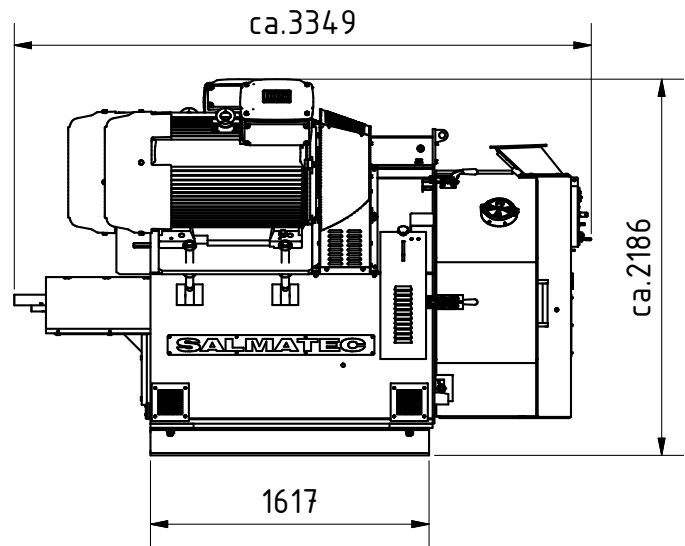
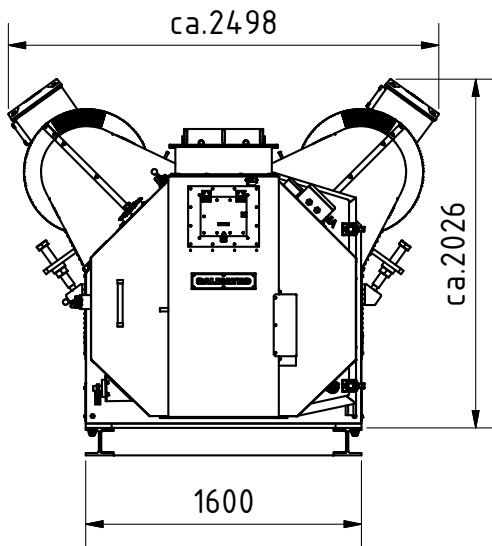
HORSE FEED

MAXIMA PELLETIZERS DIMENSIONS

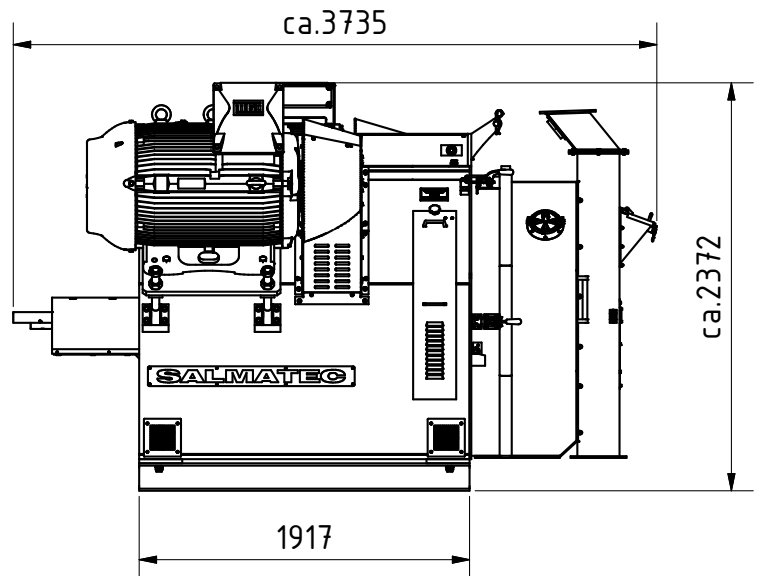
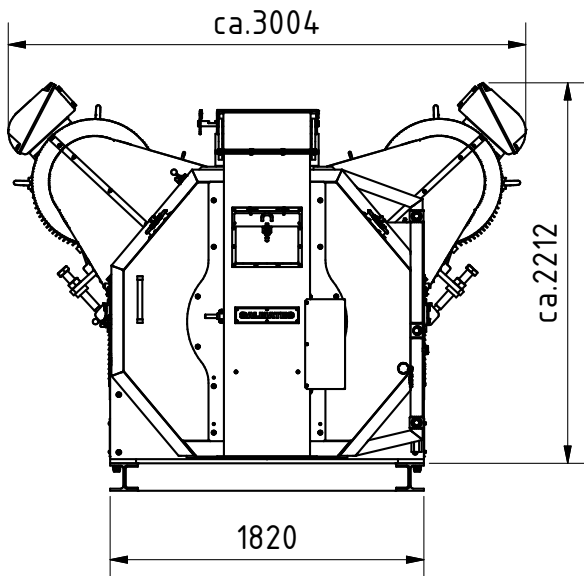
MAXIMA 450 / MAXIMA 500



MAXIMA 620 / MAXIMA 700 / MAXIMA 840



MAXIMA 900 / MAXIMA 1000







SALMATEC GmbH
Hauptstraße 79
21376 Gödenstorf