



ROLLERS & DIES

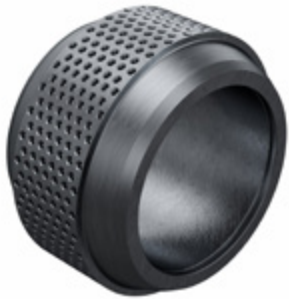


SALMATEC

ROLLER SHELLS

Different materials require **different rollers**. Therefore, at SALMATEC we supply rollers of all **types and configurations**. In addition to our own **MAXIMA** models, we also manufacture those for **all other pelleting presses**. Thanks to our state-of-the-art **production facilities in Germany**, we are able to meet the most **individual requirements** and thus provide the optimum roller surface for your needs. Whether **dimpled or grooved, fine or coarse, diagonal or straight**: we will find the right solution to optimize the quality and throughput of your pellets.

You can rely on our **decades of experience**. We will be happy to advise you on the selection of the right rollers.



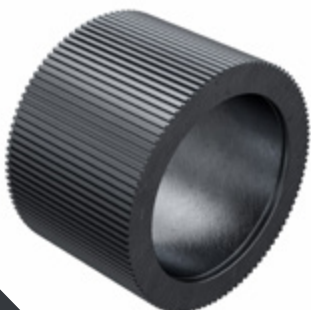
dimpled
roller shells
for biomass

grooved
roller shells
for biomass



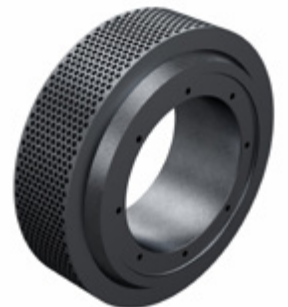
dimpled
roller shells

diagonal grooved
roller shells
for biomass



grooved
roller shells

roller shells for
flat dies





ROLLERS

For the roller surface to develop its **full potential**, the inner workings must also play their part. That's why our rollers are assembled **with the highest precision** in our assembly facility in Gödenstorf, Germany. The decisive factor is not only the selection of **high-quality individual components**, but also their precise fitting together by our specialist personnel.

Many parts **can be remanufactured** and do not have to be completely replaced. So we can disassemble your used rollers **in our assembly** and replace only the worn parts. So you can reuse the refurbished rollers **with the usual performance**.

Depending on the machine model and pelleting material, we can also equip your rollers with helpful additional equipment such as **speed or temperature monitoring**, a **cooling system**, and **lifetime lubrication**. For our MAXIMA rollers, we even have a patented system for **automatic adjustment of the roller gap** in the press chamber.

DIES

The die determines the **shape and texture of the finished pellets**.

It is therefore of particular importance to use the **optimum press length** and the **most suitable diameter** for the material at hand.

The blanks made of **German quality steel** also offer the ideal conditions for a long service life with **low wear**.

From the first chip through the **hardening process** to the final run-in, we have every production step in our own hands. This allows us to respond **flexibly to specific requirements** and adapt the dies down to the smallest detail. It also allows us to ensure that the **globally established SALMATEC quality** is maintained without compromise. Our quality management is certified according to **ISO 9001**.



DIE PRODUCTION AT **SALMATEC**

With our modern production facilities, we can manufacture **any die size** in **any configuration**. No matter whether you need a standard design or a completely unique special shape: **SALMATEC is your competent partner**. In order to determine the pelleting characteristics of your material in advance and to select the appropriate die, we can run extensive tests in **our new testing facility**.

At our production site **in Germany**, all dies are manufactured by our experienced personnel using modern **CNC technology**.

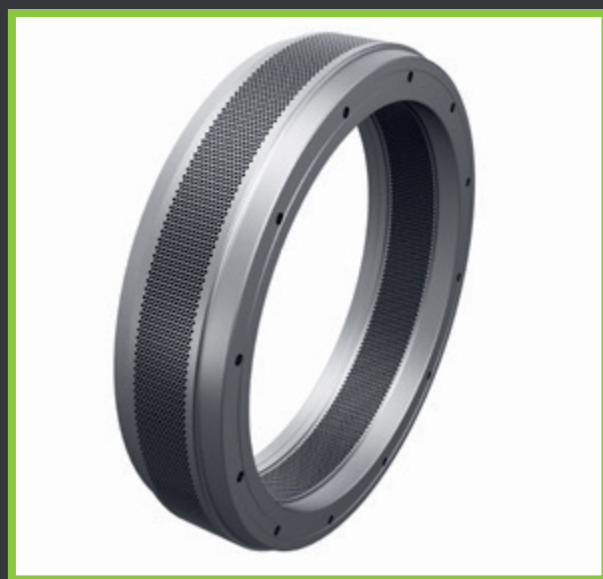
In addition to our own **MAXIMA dies**, we also manufacture **any other model**. For both ring dies and flat dies, our expertise dates back to the company's founding in **1972**.

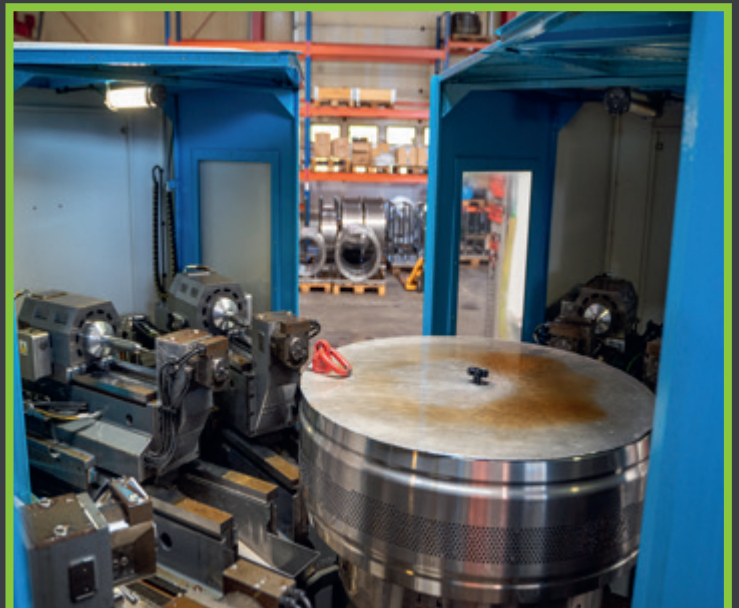
Many dies can be reprocessed at the end of their useful life to save **material and costs**. In our cleaning and reprocessing facility, we ensure that you can use your die for **as long as possible**.

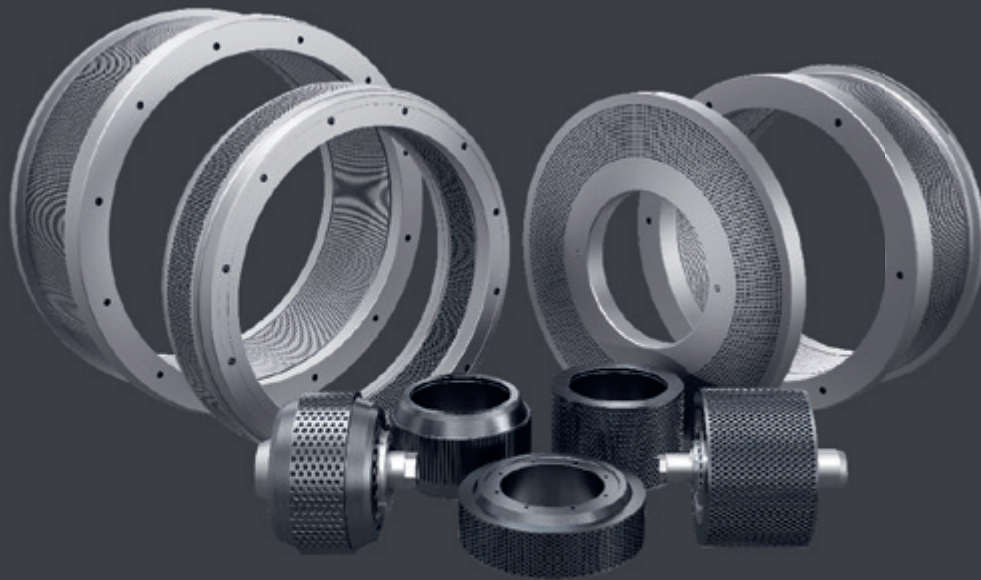
MAXIMA S-DIES

We have developed our SALMATEC MAXIMA S-dies especially for pelleting **biomass**. With the same working width, the die has a considerably narrower overall width. This **saves material** on the one hand and **facilitates assembly** on the other hand.

Like **all MAXIMA dies**, those in the S-version can also be used on both sides due to their **symmetrical shape**.







WEAR PARTS FROM SALMATEC

All SALMATEC wear parts are of the highest quality, our name has stood for this since 1972.

In our modern production facility near Hamburg, **Germany**, all wear parts are manufactured with the highest precision. A **sustainable pelleting process** requires that on the one hand economical and on the other hand environmentally friendly products and processes are used. Therefore, we are constantly developing ourselves and we are meeting the standards of **ISO 9001** quality management as well as **ISO 14001** environmental management.

We export to **more than 60 countries all over the world** and provide long-term support to our customers. Our **cooperation** does not end with the sale of a product, it just starts there. Simply convince yourself! Feel free to contact us, together we will find **the right solution** for you.

SALMATEC



CONTACT INFO



+49 4172 9897-0



www.salmatec.de/en
info@salmatec.de



Hauptstraße 79
21376 Gödenstorf
Germany